

5-FU Home Infusion Device: Taking Off the Ball

This factsheet tells you how to take off the 5-FU infusion device at home. A special plastic container called an elastomeric pump holds the 5-FU, a chemotherapy drug. Your care team may call it *the ball*. The ball connects to your port or catheter (**Figure 1**). The drug goes into your bloodstream, or infuses, over a length of time your doctor prescribes.

For most patients, the infusion lasts 48 hours. Because the infusion happens slowly, it may seem that the ball is not working. **Figure 2** shows how the ball looks when full, after 24 hours, and after 48 hours. If you think your pump is not working, call the Infusion Center at 801-585-0162.

After the Infusion

After the correct amount of time has passed, make sure the ball is completely empty. Also make sure there are no leaks around your port. If the ball is not empty or there is a leak, do not try to disconnect the ball and call your doctor's office or the Infusion Center.

What Supplies Do I Need If I am Disconnecting at Home?

Your infusion nurse will give you these supplies at your appointments. **Be sure to get the supplies before you go home.**

- Gloves
- 2 saline syringes
- Disposal bag
- Sharps container
- Alcohol wipes

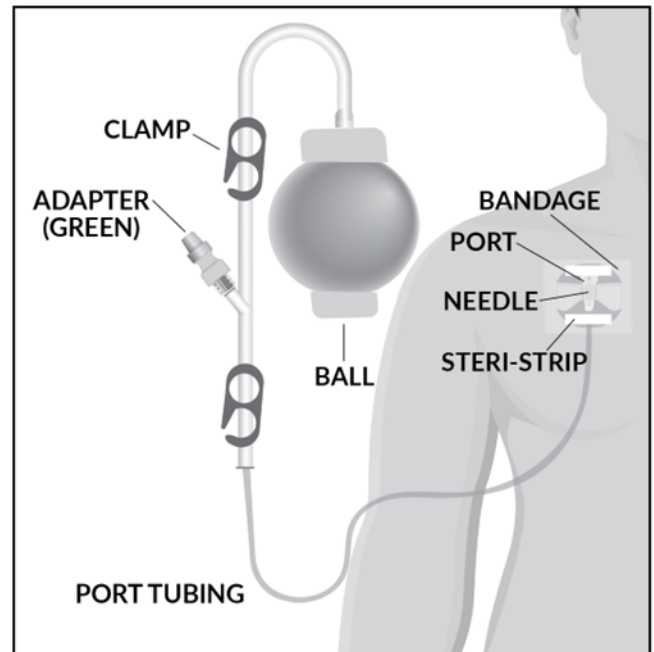


Figure 1. The ball attached to the port. The hip bag lets you do most normal activities while you get the infusion.

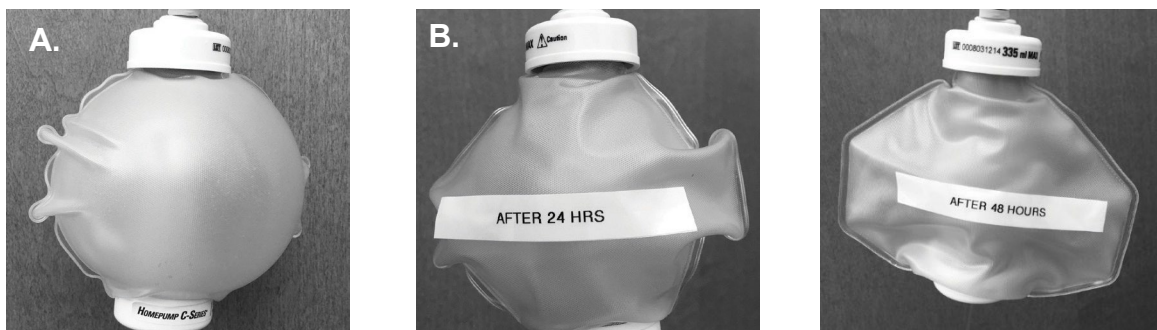


Figure 2. A. The full ball. B. The ball after 24 hours. C. The ball after 48 hours.

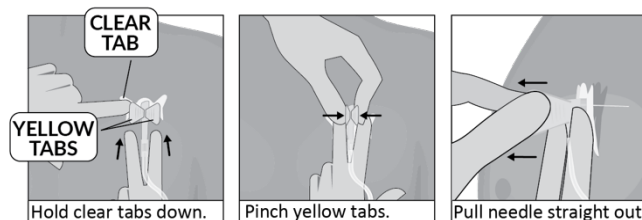
How Do I Take Off the 5-FU Ball?

Follow these steps to take off the ball:

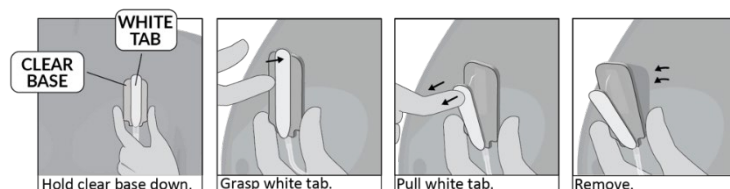
1. Choose a flat, clean area such as a counter top.
2. Wash your hands with soap and warm water. Put on the gloves.
3. Close all clamps.
4. Unscrew the tubing attached to the ball from the port tubing. Be sure to include the green adapter.
5. Put the tubing, ball, and adapter in the chemotherapy disposal bag. Close the bag and put it in your home garbage can.
6. Flush with saline.
 - a. Remove the cap from a saline syringe.
 - b. Hold the syringe with the tip pointing up. Push the syringe plunger up slowly until a drop or two of solution comes out. This removes all air from the syringe.
 - c. Open the clamp on the tube to your port.
 - d. Scrub the injection cap at the end of your port tubing with an alcohol wipe for about 15 seconds.
 - e. Twist the syringe into the injection cap.
 - f. Use the syringe plunger to push all of the saline into the tubing. Gently push a small amount of fluid at a time with brief pauses in between.
 - g. Close the clamp on the tubing.
 - h. Twist the syringe off the injection cap.
 - i. Repeat steps 6a-6g with the second saline syringe.
7. Take off the clear bandage that covers the needle in your port.
8. Hold the needle in place with one hand. Carefully remove the white steri-strips with your other hand.

9. Check the type of needle you have. There are two different types of needles. One has yellow tabs, the other has a white tab. Take the needle out following the steps for your type of needle.

- **Yellow tabs:** Hold the clear tabs on the base of the needle in place with one hand. With the other hand, pinch the yellow tabs together. Quickly pull the needle straight out of your port until you hear a click.



- **White tab:** Hold the clear base of the needle in place with one hand. With the other hand, hold the white tab. Quickly pull the needle straight out of your port until you hear a click.



10. Put the needle and tubing in the sharps container. Keep the sharps container out of the reach of children. When the container is full, make sure the lid is locked and put it in your home garbage can.
11. If a little blood comes out, put an adhesive bandage over the place where the needle went into your skin.
12. Take off the gloves and throw them away. They can go in your home garbage.
13. Wash your hands with soap and warm water.